

# HF504B50C12, HF504B50C12A



## COOLING of HIGH-CLASS CPUs

### • FEATURES

Small and light. The ball-bearing fan on the heat sink is highly effective despite its height of only 34mm! This renders it highly suitable for high speed CPU's.

### • VERY LOW POWER CONSUMPTION

An NdFe<sub>2</sub>O<sub>3</sub> magnet ensures a high torque of the ball bearing fan motor and maximum conductance of heat and simultaneous low current consumption.

### • HIGHEST RELIABILITY AND LIFE EXPECTANCY

The brushless motor is electronically commutated. A special IC is responsible for the electrical control. High reliability is achieved by 100% burn-in.

### • SILENT

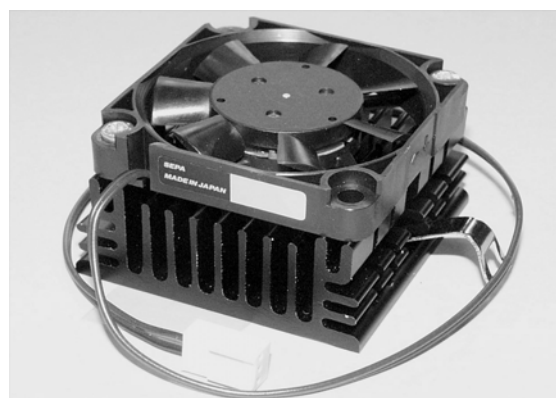
The air flow performance is increased and the noise reduced by computer-aided optimisation of the impeller and cooling surfaces.

### • ATTACHMENT

Fixation with a metal-clamping bracket for PGA-Socket Nr. 5, Nr. 7 or A (to be supplied).

### • ALARM-OUTPUT

An optional speed impulse output enables simple monitoring of the fan speed.



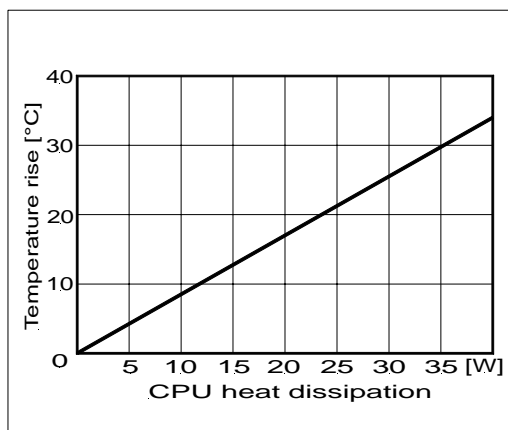
### PERFORMANCE

Typ	Operating Voltage [VDC]	Operating Current [mA]	Therm. Res. [K/W] *)	Noise [dB(A)] **)	Op. Temperature (heat sink) °C	Life Expectancy L <sub>10</sub> / MTBF [h @ 60°C]
HF504B50C12	10.2...12...13.8	140/100	1.25/0.99	29	-10 ... +80	75000 / 210000
HF504B50C12A	10.2...12...13.8	140/100	1.25/0.99	29	-10 ... +80	75000 / 210000

\*) Value measured with / without thermal conductive pad

\*\* ) Measured at 1m from the side of the fan

### COOLING PERFORMANCE



### DIMENSION

