

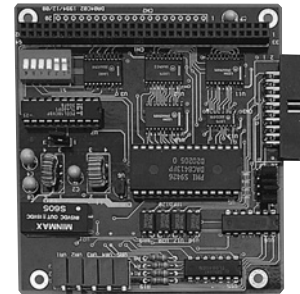
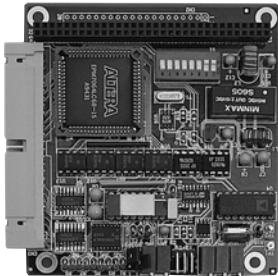
AX10412

16-Channel Isolated Temp.
/Voltage Measurement Module

AX10416

4-Channel Analog Output Module

DELTA COMPONENTS®



Features

- ▶ 16-channel of thermocouple and voltage measurement
- ▶ Programmable 12-bit or 16-bit resolution
- ▶ Supports Windows® 95/98/NT/2000 driver

Specifications

Analog Input	
Number of Inputs	16 S.E.
Input Ranges	Unipolar: 10V, 1V, 100mV, 20mV Bipolar: ±10V, ±5V, ±500mV, ±50mV, ±10mV
Gain	0.5, 1, 10, 100, 500
Thermocouple Type	J, K, S, T, E, R
Channel-to-Channel Crosstalk	85dB
A/D Conversion Time	10µs
Input Channel to Bus Isolation	500Vdc
Accuracy	
A/D Converter Type	12-bit or 16-bit, V/F
Sampling Rate	12-bit: 450Hz max.; 16-bit: 30Hz max.
System Accuracy(Gain=1)	±0.05% FSR
CJC Temperature Error	±0.25°C (0 to 100°C)
Digital I/O	
Digital Input Lines	8
Digital Output Lines	8
Logic Family	LSTTL
Input/Output Level	TTL/DTL compatible
Power Requirements	
+5Vdc	200mA max.

Physical/Environmental

Dimensions (L x W)	96 x 90mm
Weight	91g
Relative Humidity	20 to 90%, non-condensing

Packing List

Manual, utility & basic/C/pascal drivers CD

Ordering Information

Standard	
AX10412	16-Channel isolated temp./voltage measurement module
Optional	
AS59099	DOS, Windows® 3.1/95/98/NT DDL driver and device utility CD
AS59080	ActiveX control driver, 3rd party drivers (LABTECH, Labview, DasyLab) and OPC server

Features

- ▶ 4-channel analog output module
- ▶ 0 to 5V and 4 to 20mA output range
- ▶ 12-bit resolution
- ▶ Supports Windows® 95/98/NT/2000 driver

Specifications

Analog Output	
Number of Channel	4-channel
Output Voltage Range	0 to 5V
Output Current Range	4~20mA
Voltage Output Current Range	±5mA
Source Impedance	0.1Ω max.; 0.02Ω typ.
Accuracy	
Resolution	12-bit
Nonlinearity	±1/2LSB
Differential Nonlinearity	-1LSB
System Accuracy	±0.025% FSR (Voltage); ±0.05% FSR (Current)
Dynamic Performance	
Setting Time to 1/2LSB	6µs
Slew Rate	2.2V/µs typ. (Voltage); 1.2mA/µs (Current)
DAC Throughput for Single Channel	90KHz
Thermal Characteristic	
Zero Drift	±10µV 1°C
Full Scale Tempco	±20PPM of FSR/°C
Power Requirements	
+5Vdc	700mA max.

Physical/Environmental

I/O Connector	10-pin mating connector or 9-pin; D-type connector
Dimensions (L x W)	96 x 90mm
Weight	77g
Relative Humidity	20 to 90%, non-condensing

Ordering Information

Standard	
AX10416	4-channel analog output module
Optional	
AS59099	DOS, Windows® 3.1/95/98/NT DDL driver and device utility CD
AS59080	ActiveX control driver, 3rd party drivers (LABTECH, Labview, DasyLab) and OPC server