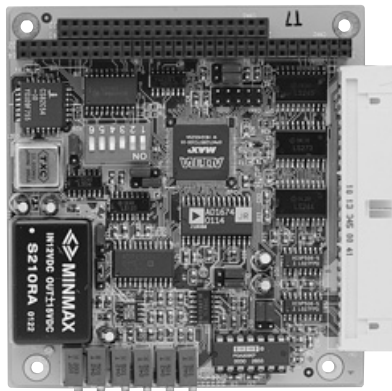


AX10410A

High Speed Data Acquisition Module

DELTA COMPONENTS®



Analog Input Subsystem

Number of Inputs	16 S.E. or 8 D.I.
Resolution	12-bit
Gain	1, 2, 4, 8
Input Ranges	Unipolar: 0-1.25, 2.5, 5, 10V Bipolar: \pm 1.25, 2.5, 5, 10V
Sampling Rate	100KHz max.
System Accuracy (Gain=1)	\pm 0.03% FSR
Channel Acquisition Time	to \pm 1/2 LSB; Gain = 1, 2, 4, 8
A/D Conversion Time	10 μ s
Input Impedance	Off channel: 100M Ω , 20pF On channel: 100M Ω , 20pF
Max. Input Voltage without damage	Power on: \pm 35V Power off: \pm 20V
Common Mode Rejection Ratio	Gain = 1:90dB
Integral Nonlinearity	\pm 1 LSB
No. of Interrupt	1
Channel of DMA	1 or 3
No. of Channel	2
Output Ranges	5V or 0 to +10V, internal reference supplied
Current Output Capacity	+5mA max.

Digital I/O Subsystem

Digital Input Lines	8
Digital Output Lines	8
Logic Family	LS TTL
Input/Output Level	TTL/DTL compatible

Counter/Timer Subsystem

Type	Programmable interval timer counters three 16-bit down counters
Clock Input	D.C. to 10MHz
Input Level	TTL, DTL CMOS compatible
Output Range	2.5MHz to 72 minutes/pls

Features

- ▶ 16 S.E. or 8 differential analog inputs with 12-bit resolution
- ▶ Max. up to 100KHz sample rate via DMA mode
- ▶ 2-channel D/A output
- ▶ 8-bit TTL/DTL compatible I/O
- ▶ 1-channel counter/timer
- ▶ Supports Windows® 95/98/NT/2000 driver

Power Requirements

+5V _{DC}	0.6A typical
-------------------	--------------

Physical/Environmental

Dimensions (L x W)	96 x 90mm
Weight	130g
Relative Humidity	20 to 90%, non-condensing

Packing List

Manual, utility & basic/C/pascal/Windows® drivers CD
--

Ordering Information

Standard	
AX10410A	High speed data acquisition module
Optional	
AX750	Screw terminal panel for A/D, D/A and D I/O signal
AX752	16-channel multiplexer & amplifier board
AX757	8-channel relay output & optoisolated D/I board
AS59099	DOS, Windows® 3.1/95/98/NT DDL driver and device utility CD
AS59080	ActiveX control driver, 3rd party drivers (LABTECH, Labview, DasyLab) and OPC server