

12.1" LCD-TFT Monitor

t.b.d.



The 12.1" LCD-TFT Monitor, built-in 1.000 nits high brightness for sunlight readable display. It offers the best visibility, performance and cost effective value. The high level of brightness together with the optimal contrast ratio renders high quality images and enhances legibility. With its fast response time and LED backlight technology, the monitor brings remarkable display quality and durability for your applications. Suitable for marine, military, medical, transportation, and industrial application.



Main Features

- Sunlight readable
- LED backlight
- High shock and vibration resistance
- Long power consumption
- Wide temperature range (-20°C to 60°C)
- High uniformity
- Low EMI noise
- Wide dimming
- Life expectancy (70.000 hrs)

Technical Specifications

Display features

- Description: 12.1" TFT LCD monitor, LED Backlight 1000 nits, XGA
- Display area: 245.8(H) x 184.3(V)mm
- Brightness: 1.000 cd/m²
- Resolution: 1.024 x 768 (XGA)
- Contrast Ratio: 700 : 1
- Pixel Pitch: 0.24(H) x 0.24(V) mm
- Viewing Angle: +80°~-80°(H), +80°~-80°(V)
- Display Colors: 262K
- Response Time: 25ms (Typical)
- Power Input: 12VDC
- Power Consumption: 22W
- Dimensions: 338x278x59.3 mm
- Weight: 3.51kg (net)

Control Board (Optional)

- VGA+Audio
- VGA+DVI
- VGA+CVBS+S-Video + Audio (Optional DVI / Component)
- VGA+DVI (Optional S-Video/ Component / Audio)

F/R Control Button

- 5 Key: Power Switch, Menu, Select (+,-), Auto
- 4 Key: Power Switch, Menu, Select (+,-)

OSD Menu

- Brightness, Contrast, H/V Position, Color, Phase, Clock

Optional

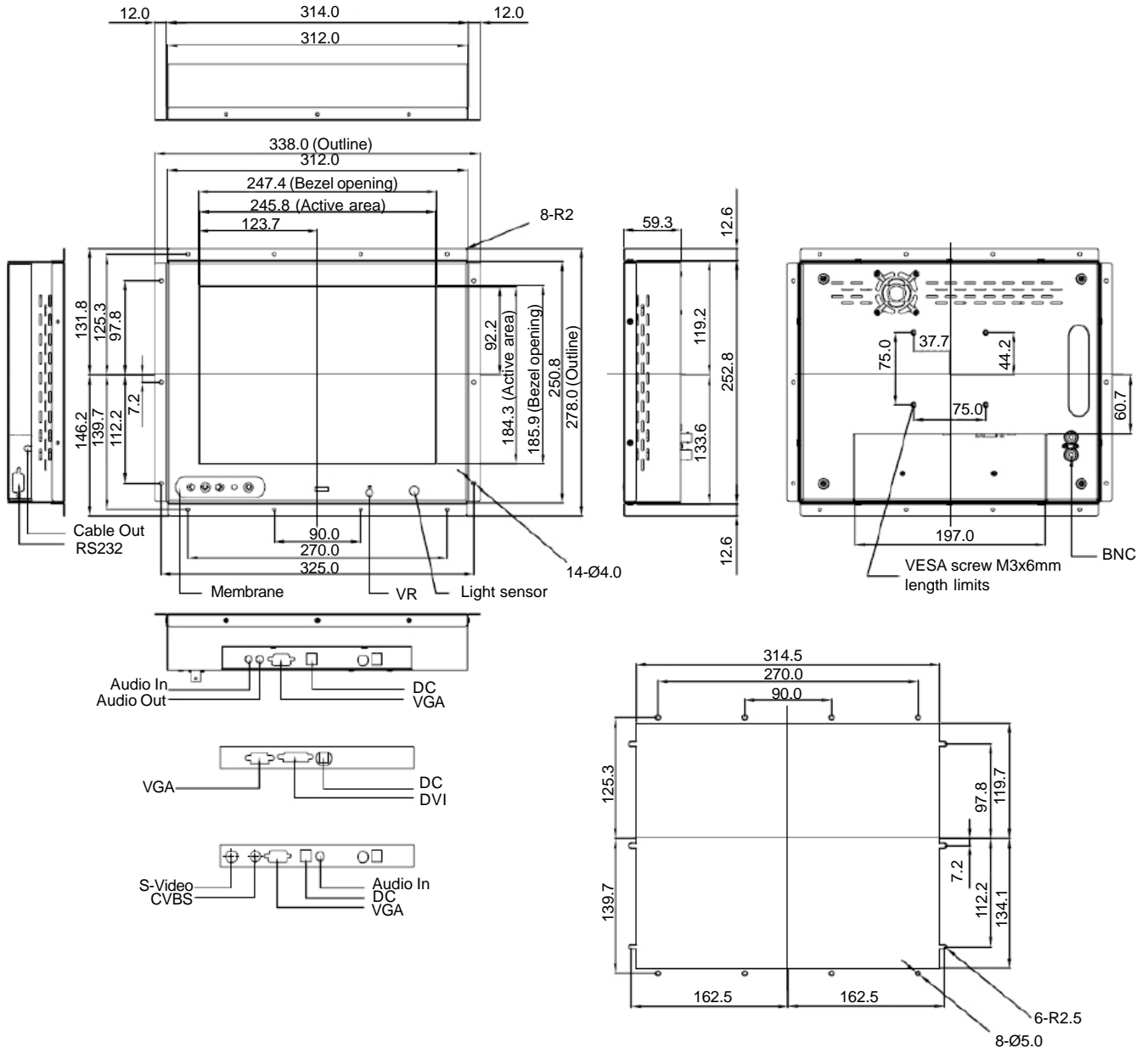
- AOT
- TouchScreen
- Waterproof



12.1" LCD-TFT Monitor

t.b.d.

Outline Dimensions



Ordering Information

- | | |
|---|---|
| t.b.d. 12.1" LCD-TFT Monitor w/o TouchScreen
LED Backlight, 1.000 cd/m ² , XGA resol., VGA | t.b.d. 12.1" LCD-TFT Monitor w/USB TouchScreen
LED Backlight, 1.000 cd/m ² , XGA resol., VGA, Audio |
| t.b.d. 12.1" LCD-TFT Monitor w/o TouchScreen
LED Backlight, 1.000 cd/m ² , XGA resol. VGA,DVI,Video,Audio | t.b.d. 12.1" LCD-TFT Monitor w/RS232 TouchScreen
LED Backlight, 1.000 cd/m ² , XGA resol., VGA, DVI |
| t.b.d. 12.1" LCD-TFT Monitor w/o TouchScreen
LED Backlight, 1.000 cd/m ² , XGA, VGA, DVI | t.b.d. 12.1" LCD-TFT Monitor w/anti-reflection glass
LED Backlight, 1.000 cd/m ² , XGA resol., VGA |