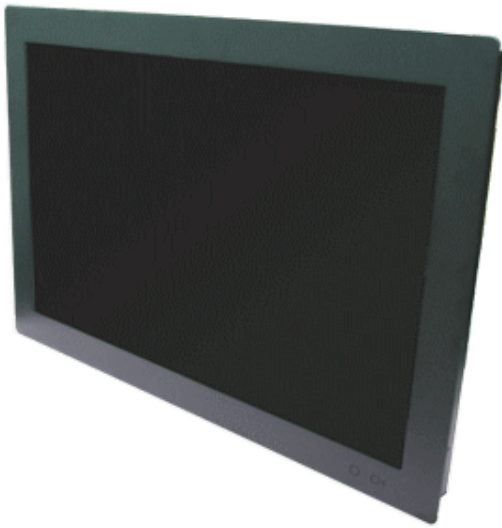


22" Wide LCD-TFT Monitor

t.b.d.



The 22" Wide LCD-TFT Monitor, built-in 1.000 nits high brightness for sunlight readable display. It offers the best visibility, performance and cost effective value. The high level of brightness together with the optimal contrast ratio renders high quality images and enhances legibility. With its fast response time and backlight technology, the monitor brings remarkable display quality and durability for your applications. Suitable for marine, military, medical, transportation, and industrial application.



Main Features

- Sunlight readable
- Wide viewing angle
- High contrast ratio
- Long lamp life
- Fast response time
- Thin and light

Technical Specifications

Display features

- Description: 22" Wide TFT LCD monitor, 1000 nits, WSXGA
- Display Area: 473.76 x 296.1mm
- Brightness: 1.000 cd/m²
- Resolution: 1.680x1.050 (WSXGA+)
- Contrast Ratio: 1.000:1
- Pixel Pitch: 0.282(H) x 0.282(V) mm
- Viewing Angle: +85° to -85°(H), +80° to -80°(V)
- Display Colors: 16.7M
- Response Time (Typical): 5ms
- Power Input: 12VDC
- Power Consumption: 70W
- Dimensions: 545x370x61.6 mm
- Weight: 6.61kg (net)

Optional

- AOT
- TouchScreen
- Waterproof

Control Board (Optional)

- VGA+Audio
- VGA+DVI
- VGA+CVBS+S-Video+Audio (Optional DVI / Component)
- VGA+DVI (Optional S-Video/ Component / Audio)

F/R Control Button

- 5 Key: Power Switch, Menu, Select (+,-), Auto
- 4 Key: Power Switch, Menu, Select (+,-)

OSD Menu

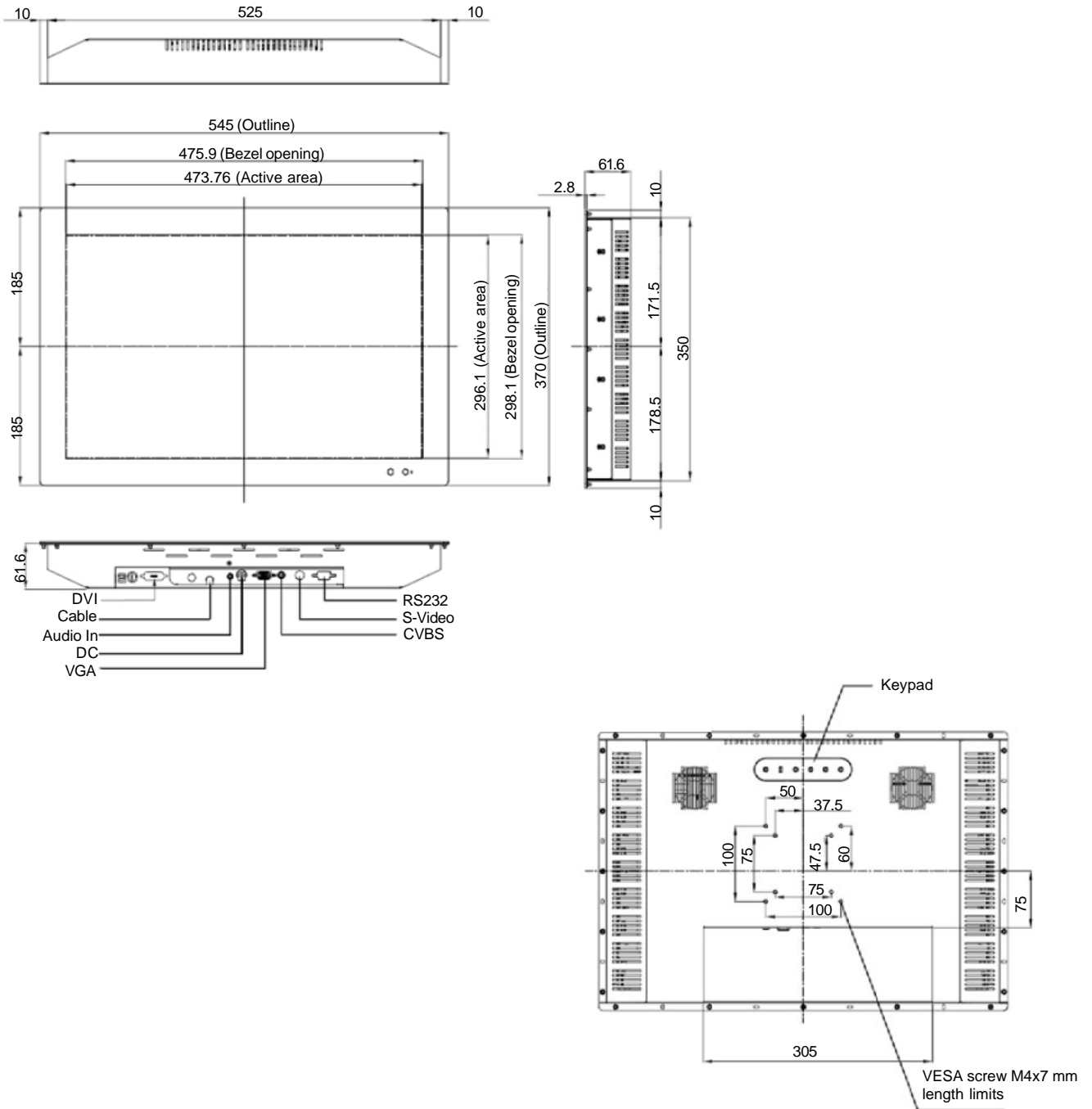
- Brightness, Contrast, H/V Position, Color, Phase, Clock

22" Wide LCD-TFT Monitor

t.b.d.



Outline Dimensions



Ordering Information

t.b.d. 22" Wide LCD-TFT Monitor, w/o TouchScreen
LED Backlight, 1.000 nits, WSXGA resol, VGA, DVI S-Video